



68-70 B-Body Mopar GEN3 HEMI Swap

P/N BH2364 – 3" 304 Stainless Steel Exhaust System
P/N BH2365 – 2.5" 304 Stainless Steel Exhaust System



Installation Instructions

Thank you for choosing to use HOOKER™ engine swap Exhaust Systems as part of your GEN3 HEMI Swap project. These Exhaust Systems are part of the most comprehensively engineered system of mounting components, headers, and exhaust systems available for this application. Please read these instructions thoroughly before attempting installation.

IMPORTANT: This exhaust system is designed for use with under-axle sway bar assemblies and may not work with some over-axle sway bar systems.

Visit www.holley.com for a complete selection of Transmission Crossmember, Headers, Exhaust, and more GEN3 HEMI support products to complete your B-Body Hemi Swap.

COMPATIBILITY INFORMATION:

This exhaust systems were specifically designed to be installed with **Hooker Blackheart** HEMI swap engine and transmission mounting components and headers for this same application. Attempts to install these exhaust systems with any other type or combination of engine and transmission mounting components may cause them to not provide their intended ground or vehicle component clearances.

Supporting Hooker Blackheart parts required for use with BH2364 & BH2365 exhaust systems:

Hooker Blackheart Headers – BH2358

Engine Mounting Brackets – BHS531

Transmission Crossmember – BHS532

Transmission Adapter Plate – BHS534 (727), BHS535 (NAG1), BHS536 (8HP70)

Transmission Mount – 71223029HKR (or any standard 2 bolt Chevy Mount of the same design)

PARTS LIST:

Qty.	Description
1	Left Header Link Pipe
1	Right Header Link Pipe
1	H-Pipe
2	Mufflers
1	Left Over-Axle Pipe

Qty.	Description
1	Left Tailpipe
1	Right Over-Axle Pipe
1	Right Tailpipe
2	Tailpipe Turn Downs

Accessory Pack Contents:

Qty.	Description
4	Exhaust Couplers
8	1.25" Band Clamps
4	Rubber Exhaust Isolators
2	Muffler Hanger Brackets
2	Tailpipe Hanger Brackets
4	1/2" x 1.75" Flanged Hex Bolt
4	1/2" Lock Nut

Qty.	Description
3	5/16 x 1" Bolt
6	5/16 Flat Washer
2	5/16 Flange Nut
5	1/4-20 x 1" Bolt
5	1/4-20 Flange Nut
1	Instruction Sheet

Tools Needed:
3/8" Metric Socket Set
15mm Deep Socket
7/16" Wrench
1/2" Wrench
Drill
9/32 Drill Bit
Center Punch
7/8 Wrench

Check the hardware package. If anything is missing, please contact Technical Service at 1-866-464-6553 or 270-781-9741.

INSTALLATION:

These instructions assume the engine, transmission, and headers are installed.

BEFORE STARTING:

Your vehicle must be raised a minimum of 18 inches. A floor hoist is ideal. If no hoist is available, we strongly urge the use of axle stands as a safety measure. **Please read and understand these instructions and disclaimer in their entirety before attempting installation.**

CAUTION! WORK ONLY ON A LEVEL SURFACE. USE JACKS /JACK STANDS OF SUFFICIENT CAPACITY TO LIFT AND SUPPORT YOUR VEHICLE. NEVER WORK UNDER A VEHICLE SUPPORTED BY A FLOOR OR BUMPER JACK.

1. Install one 3" exhaust coupler onto each header collector.
2. Align the Left (driver's) and Right (passenger's) header link pipe with the longer straight end of the pipe to the header collector.
3. Align the 3" exhaust coupler with a 50-50 split over the header collector and the header link pipe. Tighten the coupler to allow for adjustment of the link pipe (**Figure 1**).
4. Install a 2.5" or 3" exhaust coupler (depending on the kit you have) on to the outlet of each header link pipe.
5. Install the H-pipe assembly and align the H-pipe inlet to the header link pipe. Support the H-pipe at both ends.
6. Slide the coupler on to the H-pipe inlet, align with a 50-50 split between the header link pipe and the H-pipe, and tighten to allow for adjustment.
7. Align the header link pipes and H-pipe for adequate clearance on the transmission crossmember and floor pans. Start with a finger's width between these areas. Tighten the band clamps when all components are straight and level with good clearance.
8. Install a 2.5 or 3" band clamp onto the inlet and outlet of each muffler.
9. Install the muffler onto the H-pipe outlet (**Figures 1 & 2**).
10. Tighten the clamps on the H-pipe side of the muffler just enough to hold the clamps in place and still adjust the muffler on the H-pipe

NOTE: Keep the outlet end of the H-pipe supported to avoid unnecessary weight on the exhaust components and headers until the exhaust hangers are installed

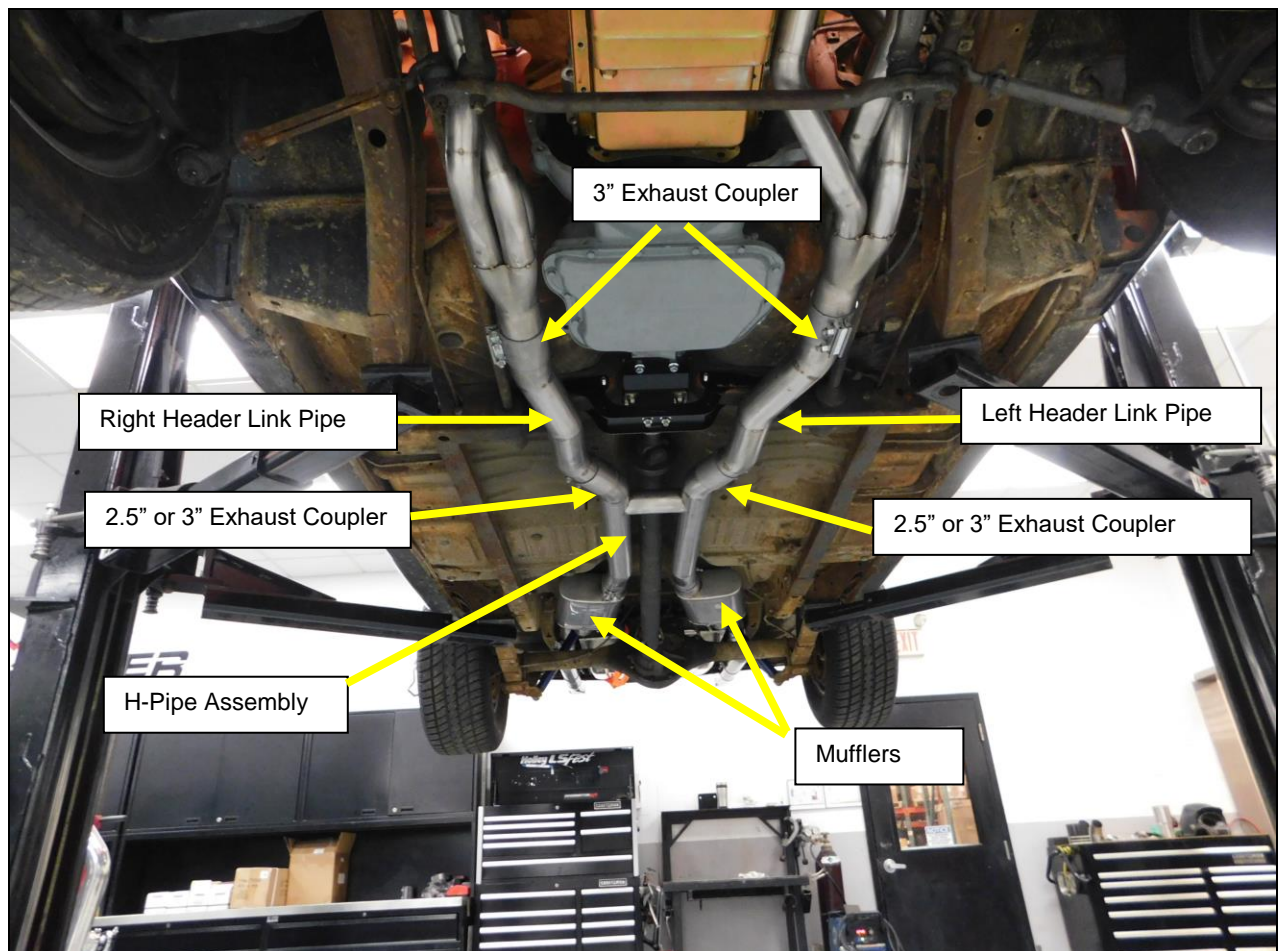


Figure 1

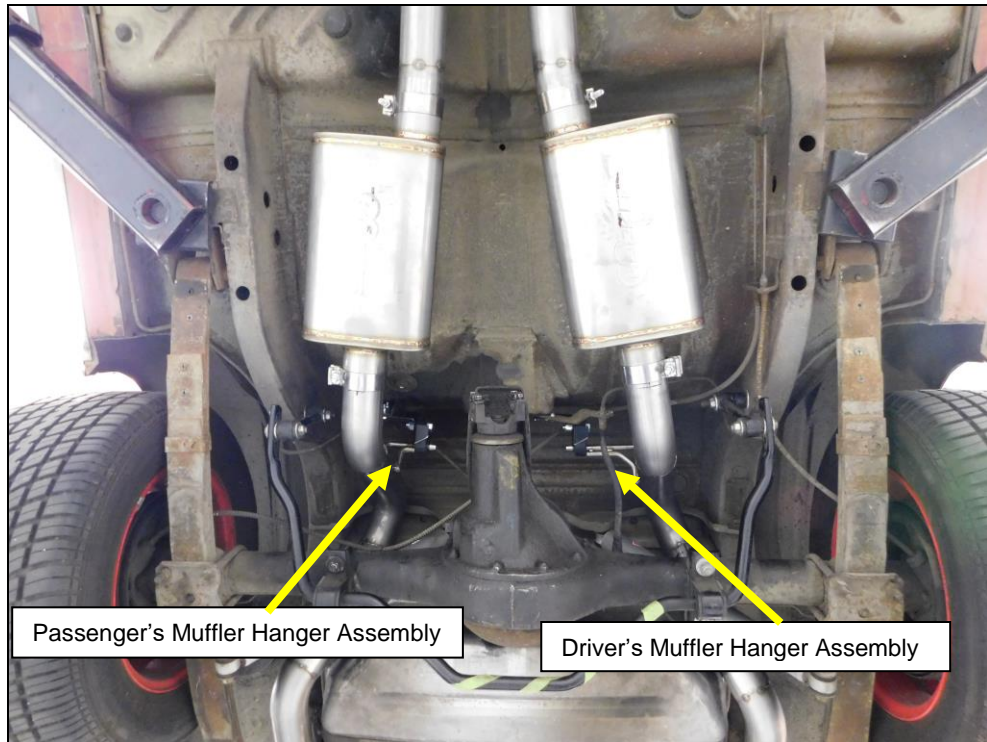


Figure 2

Muffler Hanger Brackets

1. Remove the existing left and right muffler and tailpipe hanger assemblies and clip nuts from the vehicle.
2. Pre-assemble the muffler and tailpipe hanger brackets with the provided rubber isolator, using the 1.750" long 1/2" bolt and lock nut with the washer or bolt flange on the rubber Isolator (**Figure 3**).

Note: Do not over tighten or compress the rubber Isolator.



Figure 3

Hanger Bracket Identification

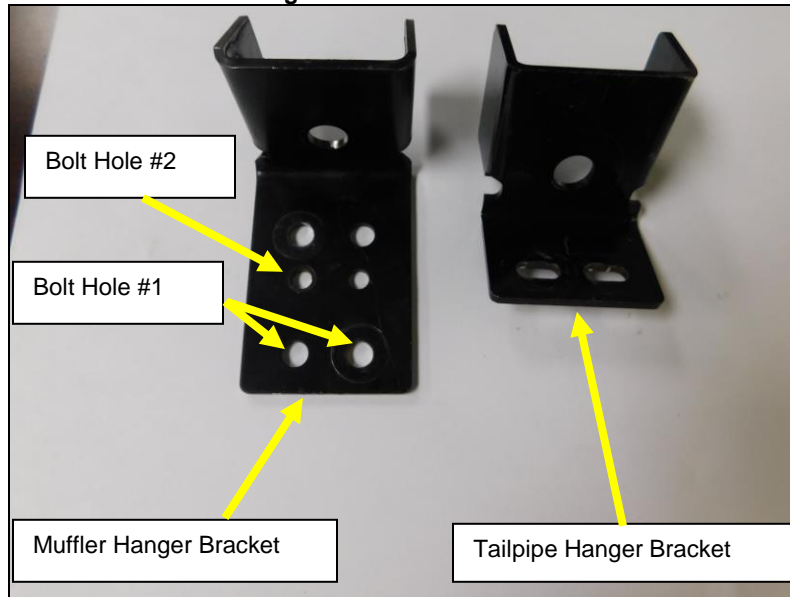


Figure 4

3. Install a provided 5/16 x1 bolt in to each bolt hole position # 1 on the muffler hanger bracket (**Figure 4**).
4. Install the Right (passenger's) muffler hanger bracket assembly on to the factory muffler hanger bracket location just above the seatbelt bolt. Install a flat washer on the back side of the factory mounting plate and install the 5/16 flange nuts. Adjust the bracket level and tighten the hardware (**Figure 5**).

Right Side Muffler Hanger Assembly

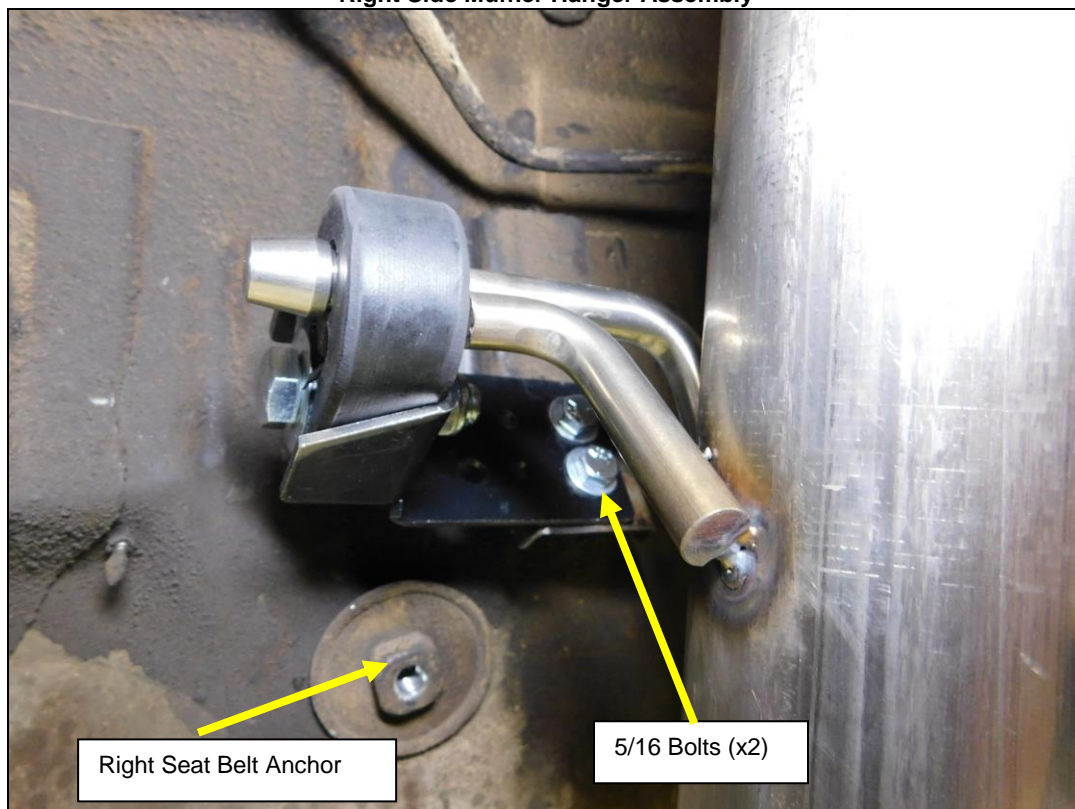


Figure 5

5. Remove the 5/16 bolt from the rear brake hose bracket mounting point.
6. Install a provided 5/16 x 1" bolt into bolt hole # 1 of the muffler hanger bracket (**Figure 6**).
7. Install the Left (driver's side) muffler hanger bracket with a provided 5/16 x 1" bolt in to the same location as the bolt removed from the brake line bracket (**Figure 6**).
8. Align the muffler hanger bracket level and tighten the 5/16 bolt.
9. Use a 9/32 drill bit and drill a hole in the brake line bracket only. Use bolt hole position #2 as a guide as shown in **Figure 7**.
10. Install the provided 1/4-20 x 1" bolt with flange nut and tighten (**Figure 6**).

Left Muffler Hanger Assembly

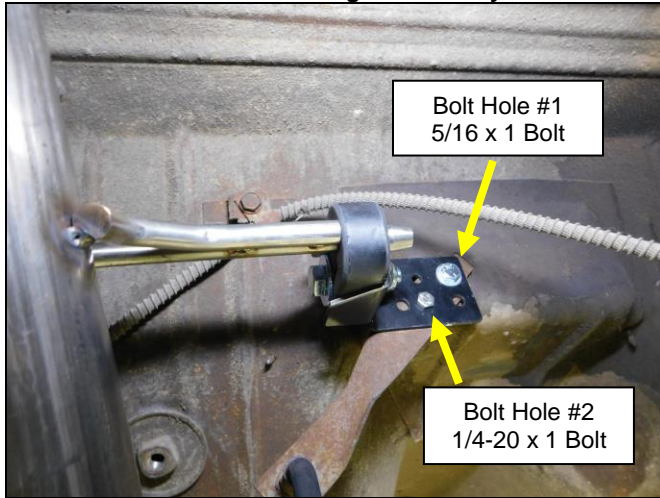


Figure 6

Left Muffler Hanger Bracket

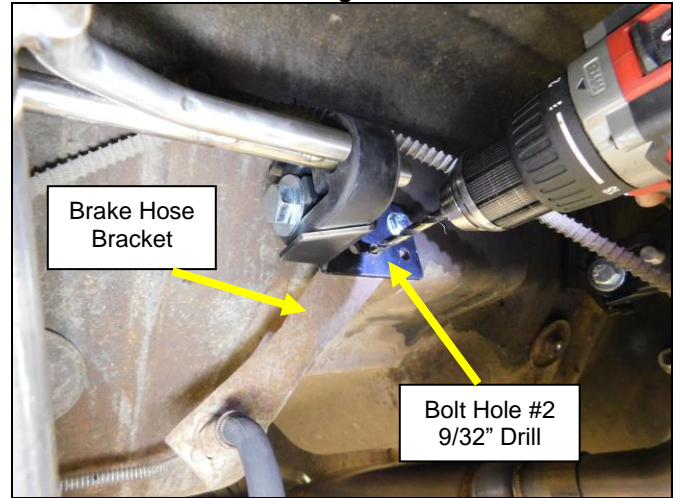


Figure 7

Tailpipe Hanger Brackets

1. Remove the gas tank from the vehicle.
CAUTION! Gasoline is extremely flammable. USE CAUTION and never smoke or have open flames around gasoline. Injury or death can result.
2. Draw a line vertically from the center of the three drain holes in the frame rail referenced in **Figure 8** up to the trunk floor pan. This will be the reference plane that the hanger bracket will be installed on.

Passenger's Side Tailpipe Hanger Bracket Location

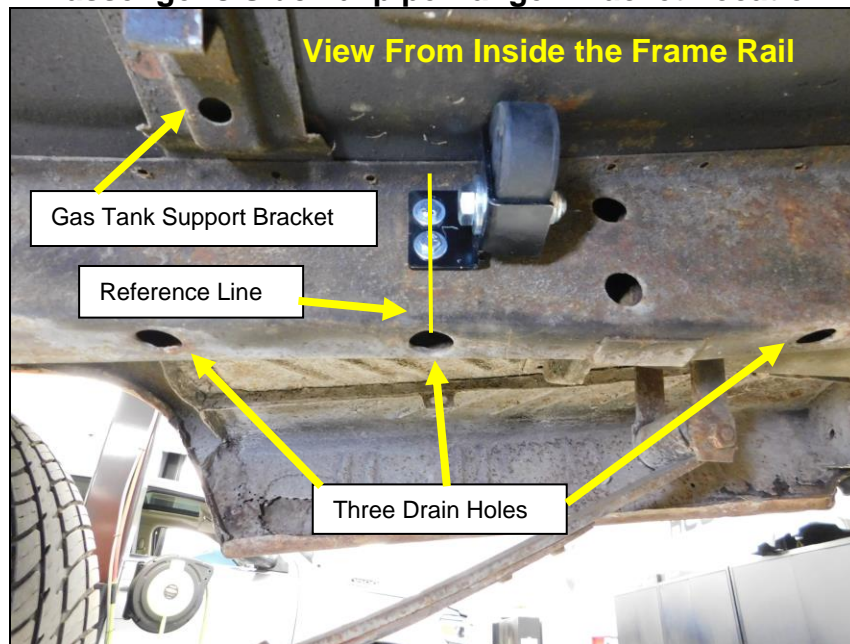


Figure 8

3. Place the tailpipe hanger bracket against the frame and up against the floor as far as it will go (**Figure 9**).
4. Align the slots in the bracket, placing the reference line in the center of the slot and scribe around the inside of the slot as a reference, use a center punch and make a drill starter mark at the center of the oval shaped marks (**Figure 10**).
5. Drill each marked slot with a 9/32" drill bit (**Figure 11**).
Note: Take care not to let the drill bit wander outside the marked area.
6. Install the pre-assembled tailpipe hanger assembly with the provided 1/4-20 x 1" flange bolts. Install the provided flange nut through the drain hole on the inside of the frame rail (**Figure 12**).
Note: Face the hanger bracket towards the front of the car.

Repeat this process for the Right side tailpipe hanger assembly

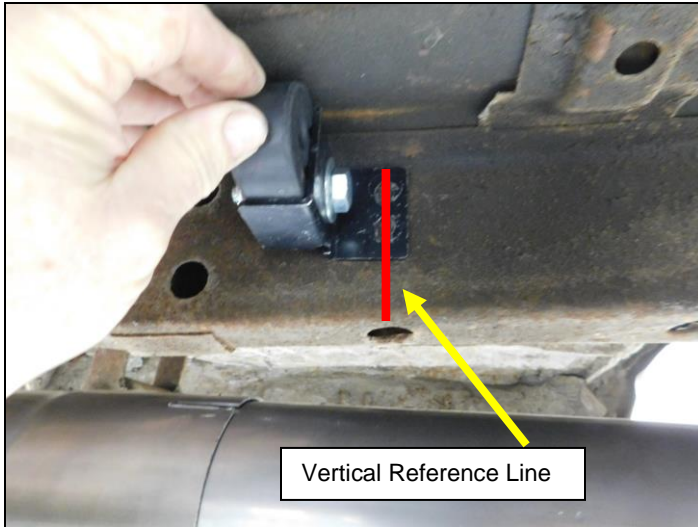


Figure 9



Figure 10

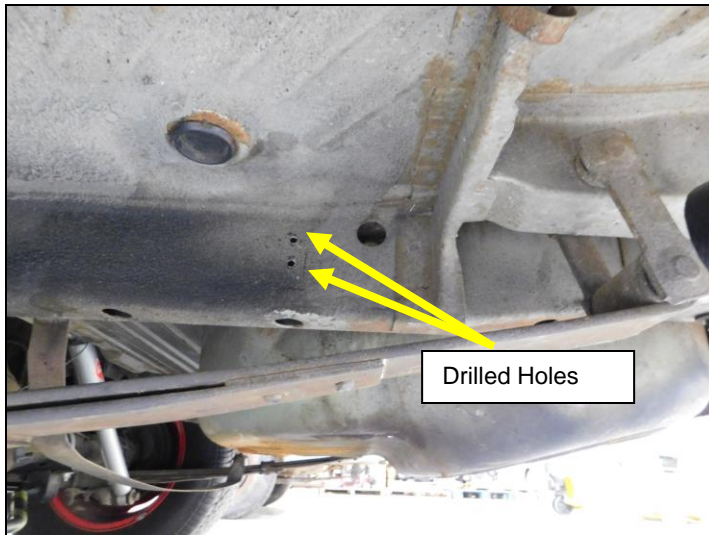


Figure 11

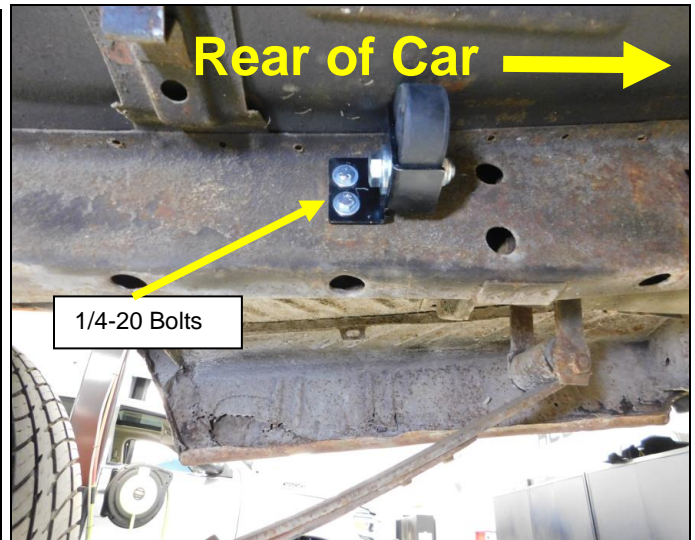


Figure 12

Tailpipe Installation

1. Install the right side tailpipe over-axle section into the muffler outlet.
2. Spray a small amount of WD-40® on to the hanger's rubber isolator. Push the isolator to the side and install the tailpipe hanger rod into the outer hole in the isolator.
3. Align the clamp on the muffler and tighten to allow for adjustment (**Figure 13**).



Figure 13

4. Install a band clamp on to the expanded end of the right tailpipe extension.
5. Install the right tailpipe extension hanger rod through the hanger isolator toward the rear of the car as far as it will go. Align the slip joint to the over-axle pipe and install the tailpipe extension on to the over-axle pipe.
6. Align and tighten the clamp to allow for adjustment.
Note: it may be necessary to bend the corner flap on the gas tank for additional tailpipe clearance.
7. Install a band clamp on to the turn down and install on to the tailpipe extension. Tighten the clamp to allow for adjustment (**Figure 14**).

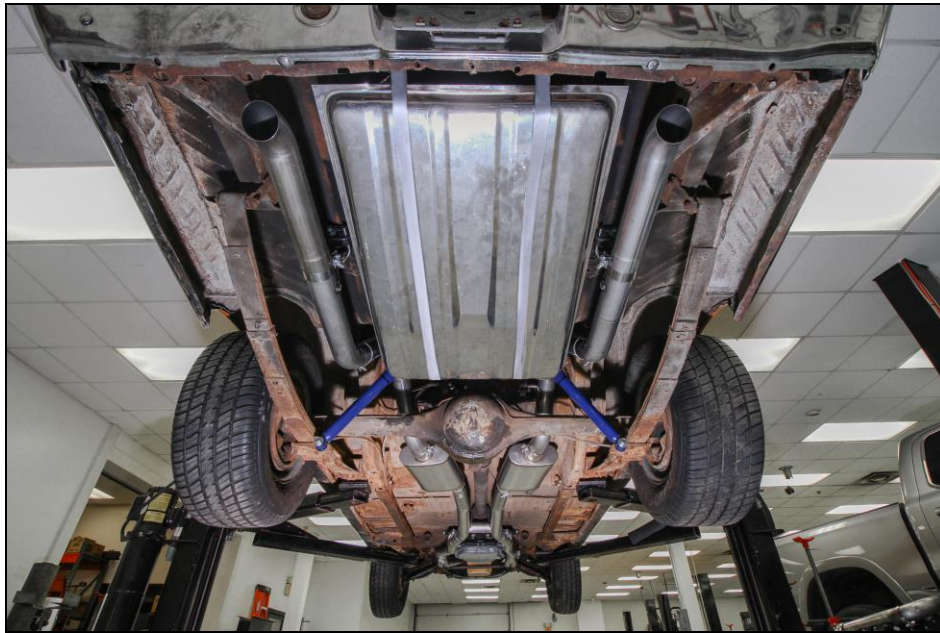


Figure 14

8. **Repeat the process for the Driver's side tailpipe.**
9. Start at the front of the exhaust and align the pipes for best alignment and clearance. Tighten clamps and couplers as you work towards the rear of the car. Re-torque the clamps after several minutes.
10. Remove the jack stands and lower the car.
11. Connect the battery and remove the wheel blocks.
12. Start the vehicle and check for leaks and loose hardware.
13. After 150 miles, re-check and tighten all bolts and clamps.
14. **ENJOY YOUR HOOKER BLACKHEART EXHAUST!**

NOTE: It is normal for the Blackheart Axle-Back Exhaust System to emit smoke for the first few minutes during the break-in period.

Any questions? Please contact Technical Service: 1-866-464-6553 or 270-781-9741. For online help, please refer to: www.holley.com.

LIMITATION OF LIABILITY – DISCLAIMER:

The regulation of emissions production, noise levels, and safety standards is undertaken by the federal government, each of the fifty state legislatures, and by many local municipalities, towns, and counties.

HOOKER™ makes no warranties of merchantability, of fitness for particular purpose, or that its products are approved for general use, or that its products comply with laws, regulations, or ordinances in the state where they may be sold to the ultimate purchaser, the consumer.

Unless expressly stated to the contrary in the catalog, instruction sheet; or price list, the entire risk as to the conformity of any company product in any such state and as to repair should the product prove to be defective or non-conforming, is on the retail purchaser, the buyer, the ultimate consumer, of such product and it is not upon the seller, distributor, or manufacturer.

In this connection, the retail purchaser, the buyer, the ultimate consumer assumes the burden of the entire cost of any and all necessary service, alterations, or repair.

THE FOREGOING STATEMENT LIMITS THE LIABILITY OF THE MANUFACTURER.

California vehicle code, sections 27156 and 38391, prohibits the advertising, offering for sale, or installation of any device, which modifies a vehicle's emission control system, unless exempted, unless otherwise noted. HOOKER™ Headers that have not received an Executive Order (E.O.) exemption from these code sections are not legal for sale or use in California on vehicles originally equipped with catalytic converters, except for racing vehicles, which may never be driven upon a highway. Check with your local authorities to determine if these headers are legal for use in your particular area.

Technical Support: 1-866-464-6553

© 2020 Hooker Headers, Inc. All Rights Reserved. Tous Droits Réservés.

199R12042
Date: 4-20-20